



Brevard Art Museum School

January 11 - March 20, 2010

at the renee foosaner education center • 1520 highland ave • melbourne, fl 32935

Registering now!



Pottery
Art History
Jewelry
Painting
Drawing
Photography
Fused Glass
Stained Glass

adultchildrenclassesworkshops
321•254•7782 www.brevardartmuseum.org

Brevard Art Museum School

Winter 2010 Workshops

call 321-254-7782 to register. *discount for early registration for non members.



#112 Lorna Meaden

Porcelain and Inspiring Surfaces

Sat. and Sun., Feb. 6 - 7, 9:00 a.m. to 4:00 p.m.

\$275, *\$250 with discount

includes 25 lbs porcelain

* Jan.8 registration discount deadline

Lorna Meaden, whose work was recently featured in *Ceramics Monthly*, is a high fire porcelain ceramic artist who pushes her work and surface enrichment to the limits. You will learn to create wheel thrown and altered porcelain pots on and off the wheel that have volume and fluidity of line, to create drawn patterns to hand build spouts and handles; to decorate using a slip inlay technique called *Mishima* and how to make a scoop, spoon, or ladle. Don't miss this opportunity to work with a very talented ceramic artist. Enrollment is limited, register early.



#108 Brett Tam

Beginning Glass Bead Making Workshop

Sat., Jan. 9 & 23, 2009 10 a.m. to 2 p.m.

\$65, \$50 with discount

\$25 supply fee at registration

No experience is necessary to learn the ancient art of glass bead making. Each participant will work at a propane torch. Enrollment is limited, register early.

#113 Intermediate Glass Bead Making Workshop

Feb.27, 10 to 2 p.m.

\$75, \$60 with discount

\$40 supply fee.

Using a hot head torch and soft glass we will explore some advanced techniques such as working with powders, fuming techniques, encasing copper mesh and hollow beads. One beginner workshop or previous lampworking skills are required for this workshop.



#114 Jerry Lanham

Everything Painting Workshop

Sat. and Sun., Feb..13 and Feb.,14

9 a. m. to 4 p.m.

\$175, \$150 with discount

Additional information coming soon.
check www.brevardartmuseum.org

At a Glance

Adult, Teen, and Children's Courses and Workshops

January 11 to March 20, 2010

ADULTS AND TEENS

MONDAY

Foundations of Drawing & Beyond	9 - 12pm
Still Life Painting for Anyone	10 - 2pm
All levels Pottery	6 - 9pm

TUESDAY

Acrylic Painting	6 - 9pm
Pottery on the Wheel	9 - 12pm
Serendipity in Clay	6 - 9pm
Foundations of Modern Art	FIT Lecture 6 - 7:15pm

WEDNESDAY

Sculpture in Clay	9 - 12pm
Oil Painting Basics & Beyond	9 - 12pm
Abstract Painting	10 - 2pm
Creating with Stained Glass	9:30 - 12pm
Photography: Lighting and Posing	6 - 9pm
Precious Metal Clay Jewelry	9 - 12pm
Precious Metal Clay Jewelry	6 - 9pm

THURSDAY

Serious Series/Pottery	9 - 12pm
Drawing for Fun	3 - 5pm
Glass Fusing and Slumping	6 - 9pm
Beginning & Intermediate Pottery	6:15 - 9:15pm
Foundations of Modern Art	FIT Lecture (Jan. only) 6 - 7:15pm

FRIDAY

Beginning Sculpture in Clay	9 - noon
The Figure-Classical through Neo	9 - noon
The Potter's Wheel For Teens	4:30 - 6:30pm
Foundations of Modern Art	BAM Studio 6 - 9pm

SATURDAY

Beginning Pottery	10 - 1pm
Oil Painting	9 - 12pm

WORKSHOPS FOR ADULTS AND TEENS

Brett Tam Beginning Glass Bead Workshop	Jan 9, Jan 27	10 - 2pm
Lorna Meaden Porcelain Workshop	Feb. 6&7	9 - 4pm
Jerry Lanham Everything Painting Workshop	Feb. 13&14	10 - 4pm
Brett Tam Intermediate Glass Bead Workshop	Feb. 27	10 - 2pm

CLASSES FOR KIDS

TUESDAY

Creative Play	ages 3 to 5	4 - 5pm
Painting Big	ages 6-9	4 - 5:30pm
Studio Art Time	ages 10-12	4 - 5:30pm

WEDNESDAY

Pottery	ages 5-8	4 - 5pm
---------	----------	---------

THURSDAY

Pottery	ages 9-12	4 - 5:30pm
Clay Sculpture	ages 6-9	4 - 5pm

FRIDAY

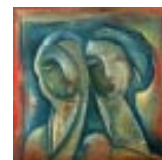
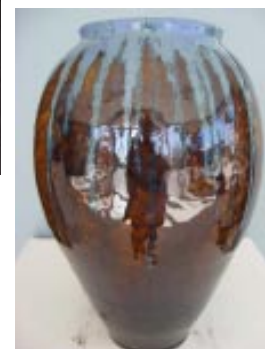
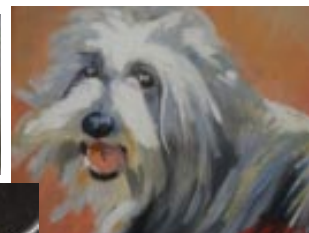
Teen pottery	ages 12-15	4:30 - 6:30pm
--------------	------------	---------------

SATURDAY

Parent and Child Clay Play	ages 3- 5	9:30 -10:30am
Creative Clay	ages 6-12	10:30 -12:30pm
Weaving	ages 9-12	1 - 2:30pm

GIRLSCOUT ACTIVITIES WITH MUSEUM EXHIBITIONS

Junior Scouts Drawing and Painting Badge	Sat. Jan. 30	10 - 12:30pm
Junior Scouts Drawing and Painting Badge	Sat. Feb. 27	10 - 12:30pm
Visual Arts IP- Painting	Sat. Feb. 13	10 - 12:30pm
Visual Arts IP- Painting	Sat. Mar 13	10 - 12:30pm



Museum Studio Store

Open Mon. - Sat. 10 a.m. to 5 p.m.
321-254-7782



1520 Highland Ave.
in old Eau Gallie Arts District

All work in the Studio Store is made by students, instructors and artists who work in our art studios.

Visit our Studio Store for unique one of a kind gifts all year long.



Give the Gift of Art

Gift certificates are available for all classes and workshops. They make thoughtful presents for birthdays, holidays and other special occasions.

CLASSES FOR ADULTS AND TEENS

Two 5 week sessions A or B: A=Jan. 11 to Feb. 13 and B=Feb. 15 to Mar 20, 2010.

One 10 week session C= Jan. 11 to Mar 20, 2010

Early registration discount deadline is Dec. 28 for session A , Feb.1 for session B, and Mar. 1 for session C

Offer may not be combined with any other discount and is subject to change.

PAINTING, DRAWING, AND ART HISTORY

#200 DRAWING FOR FUN

Jean Thomas

Drawing is the basis of nearly all visual arts activities. Have you ever wanted to learn how to improve your powers of observation and execution; explore different types of drawing media; or apply what you learn in a drawing class to your other creative endeavors. Then, this is a class for you. Composition and understanding of the basic elements of design will be explored. So grow your artistic capabilities, have fun, and take Drawing for Fun.

Thursday 3 to 5 p.m.

200A \$60, 200AA \$45 with discount
200B \$60, 200BB \$45 with discount
200C \$105, 200CC \$90 with discount

#209 ACRYLIC PAINTING

Wendy Rivkin

Painting fundamental techniques and experimental methods will be taught. We will explore painting materials, color, representational techniques and use compositional concepts to create inspired resonant paintings. Instruction will include discussion, visual examples and demonstrations. This continuing class will inspire all levels, as instruction is individualized.

Tuesday 6 to 9 p.m.

210A \$75, 210AA \$60 with discount
210B \$75, 210BB \$60 with discount
210C \$135, 210CC \$120 with discount

#213 FOUNDATIONS OF DRAWING AND BEYOND

Mason Overcash

Drawing provides the basic foundation for many other forms of art. This class is for all skill levels of drawing with an aim to improve our approach and techniques. Beginners will learn the foundations for drawing. Emphasis will be on value, contour, shading, composition, perspective, and advancement of technique. It will be an exploration of black and white drawing mediums and maybe some color. The course will include figure drawing, landscape, still lifes and other areas of interest.

Monday 9 to 12 p.m.

213A \$75, 213AA \$60 with discount
213B \$75, 213BB \$60 with discount
213C \$135, 213CC \$120 with discount

#202 OIL PAINTING BASICS AND BEYOND

Betsy Bohmer

Begin with the basics, a monochromatic painting of a still-life, then sprint ahead through the investigation of color. Open to beginning and continuing students. Students do need to have a drawing background. No late entries after first class.

Wednesday 9 to 12 p.m.

202A \$75, AA \$60 with discount
202B \$75, BB \$60 with discount
202C \$135, CC \$120 with discount

#217 OIL PAINTING

Mason Overcash

We will explore painting techniques in order to expand and enrich the look and meaning of art projects. The boundaries of the class will be defined based upon the wants and needs of the students enrolled in order to further their abilities. This could include portraiture, still lifes, mixed media, or other areas of interest. Students are encouraged to bring in past painting projects that they would like feedback on and help with. We will also explore painting on gold leaf, using different mediums to change the properties of your paints, different techniques in application, and glazing.

Saturday 9 to 12 p.m.

217A \$75, 217AA \$60 with discount
217B \$75, 217BB \$60 with discount
217C \$135, 217CC \$120 with discount

#220 CRITIQUE

Frits van Eeden **January 6 only**

This course is for artists seeking an evaluation of their paintings. Each student may bring five paintings. Group critiques are welcome and encouraged.

Wednesday 10 to 1p.m.

#218 STILL LIFE PAINTING FOR ANYONE

Frits van Eeden

Never painted or drawn before, but want to make a painting that has light and atmosphere? This class is for you. No prior experience in drawing or painting is required. Frits will go step by step and help you create a still life you will be proud of. Taking an easy, special method of wiping away thin glazes of paint, you will be able to form and draw your painting gradually with lots of room for mistakes and corrections. It is a trial and error approach that requires little draftsmanship and is very forgiving.

Monday 10 to 2 p.m.

218A \$255 , 218AA \$240 with discount

#219 ABSTRACT PAINTING

Frits van Eeden

This class is designed for the student with some previous experience with painting. The focus is on creativity and "blurring the boundaries when creating abstract art." Working large is recommended but not necessary.

Wednesday 10 to 2 p.m.

219A \$255, 219AA \$240 with discount

#216 THE FIGURE—CLASSICAL THROUGH NEO

Georgi Galalles

Figure drawing for all skill levels-action poses, the anatomy of the body, and the figure in perspective will be addressed through study of nude models. The students will advance in their understanding and sensitivity to the human form. This course is designed to accommodate students with basic, intermediate and advanced drawing skills. Model fee extra and collectable at the first class. Arrive with tools and enthusiasm; model at first class!

Friday 9 to 12 p.m.

216A \$75, 216AA \$60 with discount
216B \$75, 216BB \$60 with discount
216C \$135, 216CC \$120 with discount

#302 FOUNDATIONS OF MODERN ART UNIT 1: MODERNISM AT THE END OF THE 19TH CENTURY

Jan. 12 to Feb.12

This is a special topics course taught in collaboration with Florida Tech. Lars Jones, FIT Associate Professor of Art History will present weekly lectures at FIT and guest artist instructors will teach the studio portion each week at the Museum School. Supply list will be posted on our website: www.brevardartmuseum.org
Tues. & Thur. Jan. only: 5 to 6:15 p.m. FIT lecture

Friday 6 to 9 p.m. Museum School Studio

302A \$225, 302AA \$190 with discount

#303 FOUNDATIONS OF MODERN ART, UNIT 2: CUBISMS

Feb. 18 to Mar 19

This is a special topics course taught in collaboration with Florida Tech. Lars Jones, FIT Associate Professor of Art History will present weekly lectures at FIT and guest artist instructors will teach the studio portion each week at the Museum School. Supply list will be posted on our website: www.brevardartmuseum.org
Thursday 5 to 6:15 p.m. FIT lecture
Friday 6 to 9 p.m. Museum School Studio

303B \$225, 303BB \$190 with discount

#304 FOUNDATIONS OF MODERN ART, UNIT 3: FROM DADA TO POP ART

Mar 25 to Apr. 23

This is a special topics course taught in collaboration with Florida Tech. Lars Jones, FIT Associate Professor of Art History will present weekly lectures at FIT and guest artist instructors will teach the studio portion each week at the Museum School. Thursday 5 to 6:15 FIT lecture class

Friday 6 to 9 p.m. BAM studio class

304A \$225, 304AA \$190 with discount

Take all 3 sessions for \$600, \$500 with discount or an individual class for \$60, \$50 with discount. Call 321-254-7782 to register

JOIN THE CONVERSATION



Facebook.com/
brevardartmuseum.org/BAMSchool



twitter.com/BAMSchool

CLASSES FOR ADULTS AND TEENS

Two 5 week sessions A or B: A=Jan. 11 to Feb. 13 and B=Feb. 15 to Mar 20, 2010.

One 10 week session C= Jan. 11 to Mar 20, 2010

Early registration discount deadline is Dec. 28 for session A , Feb.1 for session B, and Mar. 1 for session C

Offer may not be combined with any other discount and is subject to change.

POTTERY AND SCULPTURE

Pottery and Sculpture Students

25 lbs of clay is included in pottery and sculpture students' tuition. Additional clay is available for \$16 and includes firing and chemical fees. Clay used in the Museum School Studios must be purchased at the school to cover these costs. Tool kits are available for purchase in the Museum Studio Store for \$10.



Lorna Meaden Porcelain Workshop

Feb. 6 and 7, 9 to 4 p.m.

\$275, \$250 with discount

early registration discount Jan. 8

call 321-254-7782 to register

#401 ALL LEVELS POTTERY

Lori Emly

Learn basic wheel and handbuilding techniques in this clay class. Surface enrichment techniques and glazing will be covered. Young children with parents welcome. Ages 7 and up. Bring your pottery tool kit, towel, and pottery apron to first class. (Tool kit available for purchase in the Museum School Store.) Tuition includes 25 lbs of clay and firing.

Monday 6 to 9 p.m.

401A \$105, 401AA \$96 with discount

401B \$105, 401BB \$96 with discount

401C \$207, 401CC \$192 with discount

OPEN STUDIO

Pottery and sculpture open studio students are encouraged to use open studio time to continue projects begun in class. Open studio time should not be used for new projects. Days and times of the clay open studio will be announced and posted for students. Attendees must be currently enrolled in a pottery or sculpture class and be able to work independently. All students are required to clean up after themselves and are required to sign in and out and do lab chores to maintain the free open studio time. This time is not intended to take the place of a production studio. The pottery department reserves the right to limit the amount of pottery produced.

#402 POTTERY ON THE WHEEL

Nancy Trezza

Emphasis on the art of throwing. The course is for the beginning and advanced student and will also include handbuilding and extrusions. Surface enrichment and glazing techniques will be covered. Bring your pottery tool kit, towel, and apron to first class. (Tool kit available for purchase in the Museum School Store.) Tuition includes 25 lbs of clay and firing.

Tuesday 9 to 12 p.m.

402A \$105, 402AA \$96 with discount

402B \$105, 402BB \$96 with discount

402C \$207, 402CC \$192 with discount

#403 SERENDIPITY IN CLAY

Elaine Rowgo

This class explores wheel, handbuilt, and extrusion methods of working with clay. A fun approach and a creative outlet for all. Open to beginning and intermediate students. Bring your pottery tool kit, towel, and pottery apron to first class. (Tool kit available for purchase in the Museum School Store.) Tuition includes 25 lbs clay and firing.

Tuesday 6 to 9 p.m.

403A \$105, 403AA \$96 with discount

403B \$105, 403BB \$96 with discount

403C \$207, 403CC \$192 with discount

#404 BEGINNING, INTERMEDIATE AND ADVANCED POTTERY

Bruce Swahlan

This class focuses on good wheel-thrown pottery techniques as well as providing a continuous learning environment for advanced students. This class will take the student through the complete pottery life cycle from forming clay on the potter's wheel, trimming, bisque firing and final glazing to the completion of a work of art. Final glazing/firing techniques will include high fire, saggar, and Raku where the student will be involved with the entire firing process. Bring your pottery tool kit, towel, and pottery apron to first class. (Tool kit available for purchase in the Museum School Store.) Tuition includes 25 lbs of clay and firing.

Thursday 6:15 to 9:15 p.m.

404A \$105, 404AA \$96 with discount

404B \$105, 404BB \$96 with discount

404C \$207, 404CC \$192 with discount

#411 THE POTTER'S WHEEL FOR TEENS

Redge Wiebusch

Join this pottery class for lots of fun on the potter's wheel. You will learn the basics of throwing cups, bottles, bowls and making composite pots. You will also create a variety of surface enrichment and glazing techniques. Tuition includes clay and firing.

Friday, Ages 12 to 15, 4:30 to 6:30 p.m.

411A \$105, 411AA \$96 with discount

411B \$105, 411BB \$96 with discount

411C \$207, 411CC \$192 with discount

#409 SERIOUS SERIES AND MORE

Bobbie McMillan

This is an advanced studio class for both wheel and handbuilding students. Each student is encouraged to investigate or express their personal vision of a particular form and complete a series consisting of 10 or more pieces. Group critiques and discussions are provided to meet the specific needs of each student and the group. Raku and alternative firing techniques are included. Tuition includes 25 lbs of clay and firing.

Thursday 9 to 12 p.m.

409A \$105, 409AA \$96 with discount

409B \$105, 409BB \$96 with discount

409C \$207, 409CC \$192 with discount

#406 SCULPTURE IN CLAY

Suzanne Peiffer

All levels. In this class you will find your hidden creativity. Clay is easy and fun to work with. For the first class, everyone should have an idea of what they wish to create, via photos, magazines clippings, etc. There are no "assignments". Each person will choose his or her own subject and will be given individual attention to aid in reaching their goal. Tuition includes 25 lbs of clay and firing.

Wednesday 9 to 12 p.m.

406A \$105, 406AA \$96 with discount

406B \$105, 406BB \$96 with discount

406C \$207, 406CC \$192 with discount

#410 BEGINNING SCULPTURE IN CLAY

Suzanne Peiffer

If you thought you could never create sculpture in clay, join this class to ease into it gently. Special attention is given to those who have never even made a mud pie. You may surprise yourself with the results. Tuition includes 25 lbs of clay and firing.

Friday 9 to 12 p.m.

410A \$105, 410AA \$96 with discount

410B \$105, 410BB \$96 with discount

410C \$207, 410CC \$192 with discount

#407 BEGINNING POTTERY

Fran Molloy

Learn basic wheel and handbuilding techniques in this clay class. Trimming, finishing, adding handles, feet, and spouts and glazing will be covered. Children with parents welcome. Ages 7 and up. Bring your pottery tool kit, towel, and pottery apron to first class. (Tool kit available for purchase in the Museum School Store.) Tuition includes 25 lbs of clay and firing.

Saturday 10 to 1 p.m.

407A \$105, 407AA \$96 with discount

407B \$105, 407BB \$96 with discount

407C \$207, 407CC \$192 with discount

Rent Wheel Time!!!

**Must have experience and work unassisted! \$10 per hour.
call 321-254-7782 for details**

CLASSES FOR ADULTS AND TEENS

Two 5 week sessions A or B: A=Jan. 11 to Feb. 13 and B=Feb. 15 to Mar 20, 2010.

One 10 week session C= Jan. 11 to Mar 20, 2010

Early registration discount deadline is Dec. 28 for session A , Feb.1 for session B, and Mar. 1 for session C

Offer may not be combined with any other discount and is subject to change.

PHOTOGRAPHY, GLASS, AND JEWELRY

#500 CREATING WITH STAINED GLASS

Jackie Scone

Learn to express your imagination through the colorful world of stained glass. You will learn basic copper foil techniques of construction that will take you from design conception to stained glass panel.

Challenging and fun, this class will help you see glass in a whole new light! Continuing students welcome. \$30 Supply fee payable at registration.

Wednesday 9:30 to 12 p.m.

500A \$100, 500AA \$85 with discount
500B \$100, 500BB \$85 with discount
500C \$185, 500CC \$170 with discount

#501 GLASS FUSING AND SLUMPING

Lori Emly

Amaze yourself in an exploration of glass.

Learn to cut and fuse glass and then slump into a mold. Experiment with a variety of projects- jewelry, small bowls, plates and more. Create designs with frit and stringers. Basic tools and molds provided. \$25 supply fee provides for starter kits payable at registration. Supplies could be more than \$25 based on projects chosen or students may bring their own glass.

Thursday 6 to 9 p.m.

501A \$100, 501AA \$85 with discount
501B \$100, 501BB \$85 with discount
501C \$185, 501CC \$170 with discount

#413 PRECIOUS METAL CLAY JEWELRY

Shirley Dolph

Learn the basic techniques of working with this versatile clay-like material and create your own earrings, pendants, rings, and more. PMC is a revolutionary material developed by Mitsubishi Materials of Japan. Tiny particles of pure silver are suspended in an organic binder to create a material that can be worked like modeling clay. Pieces are fired in a kiln to 1750°F to burn off the binder and fuse the metal. The result is solid, 100% pure silver jewelry. \$100 lab fee payable to the instructor the first day of class. (Supplies include tool kit, 18g PMC lump, 18g PMC paste, 9g PMC syringe.) Repeat students purchase supplies as needed.

Wednesday 9 to 12 p.m.

413A \$100, 413AA \$85 with discount
413B \$100, 413BB \$85 with discount

#412 PRECIOUS METAL CLAY JEWELRY

Shirley Dolph

Learn the basic techniques of working with this versatile clay-like material and create your own earrings, pendants, rings, and more. PMC is a revolutionary material developed by Mitsubishi Materials of Japan. Tiny particles of pure silver are suspended in an organic binder to create a material that can be worked like modeling clay. Pieces are fired in a kiln to 1750°F to burn off the binder and fuse the metal. The result is solid, 100% pure silver jewelry. \$100 lab fee payable to the instructor the first day of class. (Supplies include tool kit, 18g PMC lump, 18g PMC paste, 9g PMC syringe.) Repeat students purchase supplies as needed.

Wednesday 6 to 9 p.m.

412A \$100, 412AA \$85 with discount
412B \$100, 412BB \$85 with discount

#603 PHOTOGRAPHY: LIGHTING AND POSING

Nick Nichols

Sharpen your skills in posing techniques both in studio and under early evening and nighttime lighting conditions. Imagine eight weeks of learning to pose both individuals and small groups for portraiture either in a studio or in natural outdoor locations. This is not a lab course, so either a film or digital camera may be used. NOTE: A SLR either film or digital, is recommended. A sturdy tripod is also recommended, but is not mandatory.

Wednesday 6 to 9 p.m.

603A \$100, 603AA \$85 with discount

Sunday Afternoon Salon

Sunday, Jan. 31, 3 p.m.

All aspiring and experienced artists are welcome to attend the Museum School's Sunday Afternoon Salons. Once a quarter you may meet with many of the region's most prominent artists and craftspeople for stimulating conversation and constructive critiques in a friendly, relaxed environment. The salon is one part potluck, one part art-assessment opportunity, and it's free! (The only prerequisite is that you bring one piece of your artwork and some finger food to share and BYO non-alcoholic beverage).

Don't miss out on these sensational Sundays. The salon is open to all media and all levels of development.

RSVP to Bobbie by Friday, Jan. 29
bobbie@brevardartmuseum.org

#115 Make your own Dinnerware Party **(3 fun classes)**

Nancy Trezza

In just three classes you will make a complete place setting and have a party too! First, you will handbuild a plate, mug, goblet, and napkin ring holder. Next, you will glaze all of your new dinnerware pieces, and finally, celebrate in the last class with a pot luck dinner party. Great fun for a group of friends, Red Hats, family, and more! Price includes all materials.

Class 1. Feb.13, 1 to 4 p.m.; Class 2. Feb. 27, 1 to 3 p.m.; Class 3. March 13, 1 to 2:30 p.m. \$80, \$65 with discount

CLASSES FOR KIDS

Two 5 week sessions A or B: A=Jan. 11 to Feb. 13 and B=Feb. 15 to Mar 20, 2010.

One 10 week session C= Jan. 11 to Mar 20, 2010

Early registration discount deadline is Dec. 28 for session A , Feb.1 for session B, and Mar. 1 for session C

Offer may not be combined with any other discount and is subject to change.



#813 CREATIVE PLAY FOR AGES 3 TO 5

Sonja Light

Mixed media activities that will include clay, painting and drama based on children's literature and music.

Tuesday, ages 3 to 5, 4:00-5:00p.m.

813A \$60, 813AA \$45 with discount

813B \$60, 813BB \$45 with discount

813C \$105, 813CC \$90 with discount

#802 PAINTING BIG FOR AGES 6 TO 9

Pat Widdowson

Painting big explores the study of bold colors and strokes creating large works in the style of Georgia O'Keeffe, Van Gogh and others. The children will plan and execute their art work at their own pace using their imagination and drawing inspiration from the Museum's current exhibitions and the permanent collection. Painting Big gives the child freedom to discover their creativity in a setting where dress for mess is expected and encouraged.

Tuesday, Ages 6 to 9, 4 - 5:30 p.m.

802A \$60, 802AA \$45 with discount

802B \$60, 802BB \$45 with discount

802C \$105, 802CC \$90 with discount

#807 STUDIO ART TIME AGES 10 TO 12

Karen Monahan

Expand your child's art experience and challenge his/her imagination. Participants will explore drawing, painting, collage and sculpture. Children take a gallery walk in the Museum during each session for creative inspiration.

Tuesday, Ages 10 to 12, 4 to 5:30 p.m.

807A \$60, 807AA \$45 with discount

807B \$60, 807BB \$45 with discount

807C \$105, 807CC \$90 with discount



Reserve Your
Child's Birthday
Party Today!
call 254-7782

#804 POTTERY AGES 5 TO 8

Nadine Antaillia

Kids will have a great time in this class making animals, figures, and neat pots that relate to pottery and ceramics in the Museum's permanent collection. They will learn to use the potter's wheel and handbuilding techniques. Projects will be bisque fired and glazed or painted. Tuition includes clay and firing.

Wednesday Ages 5-8, 4-5 p.m.

804A \$60, 804AA \$45 with discount

804B \$60, 804BB \$45 with discount

804C \$105, 804CC \$90 with discount

#808 CLAY SCULPTURE AGES 9 TO 12

Kim Church

Children will explore a variety of handbuilding techniques to create animal sculptures and vessels. Projects will be bisque fired and glazed or painted. Supply fee \$5.

Thursday, Ages 9 to 12, 4 to 5 p.m.

808A \$60, 808AA \$45 with discount

808B \$60, 808BB \$45 with discount

808C \$105, 808CC \$90 with discount

NEW SATURDAY CLASSES

#814 PARENT AND CHILD CLAY PLAY AGES 3 TO 5

Sonja Light

This class is for parents and grandparents and their young children to explore and learn about clay together through a variety of art activities. Great fun! Dress for mess!

Saturday 9:30-10:30

814A \$60, 814AA \$45 with discount

814B \$60, 814BB \$45 with discount

814C \$105, 814CC \$90 with discount

#815 CREATIVE CLAY AGES 6-12

Sonja Light

You will make clay sculpture and other projects in clay using hand-building techniques.

Saturday 10:30-12:30

815A \$60, 815AA \$45 with discount

815B \$60, 815BB \$45 with discount

815C \$105, 815CC \$90 with discount

#812 WEAVING AGES 9 TO 12

Angela Perry

Try weaving with different materials like yarn and fabric, then decorate your project with fringes and beads. You will also learn about of the long history of weaving and visit the Museum and see the weavings in the permanent collection.

Saturday, Ages 9-12, 1 to 2:30 p.m.

812A \$60, 812AA \$45 with discount

812B \$60, 812BB \$45 with discount

812C \$105, 812CC \$90 with discount

Home School, Girl Scouts, Boy Scouts, Special Events

Special Classes? Special Workshops? Demonstrations?



We continually look for ways to enrich our community with art. We can create a class just for your group. We like a minimum registration of 8 to do this. Or maybe you would just like a demonstration for your class? If you are interested contact Bobbie at bobbie@brevardartmuseum.org

Why learn about the arts?

It has been said that *“Education in the arts benefits students by: cultivating the whole child by building multiple literacies (e.g. developing intuition, reasoning, imagination, and dexterity) into unique forms of expression and communication; initiating them into a variety of ways of perceiving and thinking that will help them see and grasp life in new ways...”*

GIRL SCOUT OPPORTUNITIES

Junior Scout Drawing and Painting Badge in conjunction with Museum Exhibition *Navel Gazing: Artists Visions of Florida*

First, the Girl Scouts will tour our Museum galleries drawing inspiration from the Museum’s current exhibition *Navel Gazing: Artists Visions of Florida*. During the tour, Girl Scouts will see an extraordinary selection of artworks celebrating diverse views of our state. Artists native to Florida and abroad were asked to investigate our state’s image and culture by creating new works of art in all media. After the tour, the Girl Scouts will go to the Museum School’s studios to paint their own views of *Navel Gazing*. A great start or continuation for girls toward their Drawing and Painting Badge.

General Information:

Program is offered two times:

Date: Sat., Jan 30 and Sat. Feb.27, 2010 Pre-registration is required.

Time: 10 a.m. to 12:30 p.m.

Location: Brevard Art Museum School, 1520 Highland Ave., Melbourne

Other: Girls may register individually

Min/Max: 8/15

Cost: \$16 per Girl Scout; no charge for chaperones

Registration: Call (321) 254-7782. Registration required by Mon. Jan. 25 for the Jan. 30 activity, Mon., Feb. 22 for the Feb. 27 activity. Full payment is required to secure reservation. No refunds will be made within one week prior to the workshop date.

Visual Arts IP – Painting in conjunction with our Museum Exhibition *Navel Gazing: Artists Visions of Florida*

Scouts will tour our Museum Exhibition *Navel Gazing: Artists Visions of Florida*. During the tour, Girl Scouts will see an extraordinary selection of artworks celebrating diverse views of our state. Artists native to Florida and abroad were asked to investigate our state’s image and culture by creating new works of art in all media. After the tour, the Girl Scouts will go to the Museum School’s studios to paint their own views of *Navel Gazing*. A great start or continuation for girls working toward their Visual Arts IP.

General Information:

Date: Sat., Feb.13, and Sat., March 13, 2010. Pre-registration is required.

Time: 10:00 to 12:30 p.m.

Location: Brevard Art Museum, 1520 Highland Ave., Melbourne

Other: Girls may register individually.

Min/Max: 8/15

Cost: \$15 per Girl Scout; no charge for chaperones.

Registration: Call (321) 254-7782. Registration required by Mon., Feb. 8 for the Feb. 13 activity and Mon., March 8 for the March 13 activity.

Full payment is required to secure reservation. No refunds will be made within one week prior to the workshop date.

Call for Art Class and Workshop Proposals

The Museum School is requesting submission of proposals for Fall 2010 and Winter 2011 art classes and workshops. We are seeking classes and workshops in a variety of media such as painting, drawing, sculpture, ceramics, and mixed media, and for all age levels - youth, teens, adults and seniors. Contact Bobbie at bobbie@brevardartmuseum.org.

Student Volunteer Program

The Student Volunteer Program at Brevard Art Museum is available for students in grades 9th - 12th, as well as those in college. The program runs throughout the year and offers a variety of volunteer opportunities. Students can earn community service hours, learn new skills and gain valuable experience. If you are interested in learning about art and culture, helping children, and meeting new friends, then consider helping the Brevard Art Museum Education Department by volunteering. Contact Bobbie at bobbie@brevardartmuseum.org.

Brevard Art Museum School Artist / Instructors

Nadine Antaillia received her BFA in Theater from the University of Montevallo. She has graduate courses in theatre and costuming from the University of North Carolina. She is a former BAM pottery fellowship student and has been a working potter for several years. Nadine is also the oxidation firing technician for the pottery studio.

Betsy Bohmer has a BA in art education from Silver Lake College in Wisconsin and a MS in art education from the University of Wisconsin in Milwaukee. She has been in shows in Wisconsin, Chicago, and Florida.

Kim Church has been a Studio Potter for many years. She sells her work in Fifth Avenue Art Gallery, Gallery on Fifth and the Museum Studio Store. She is the Museum School Studio Store Manager.

Shirley Dolph is certified in PMC. She been working in the medium for several years and sells her work in Canada and the Museum School studio store.

Lori Emly is a recently retired Electrical Engineer from Dallas, Texas. She has been a successful artist working in dyed fabrics, clay, and glass.

Sonja Light has a BFA in design from University of Kansas and a BS in education from Emporia State in Kansas.

Bobbie McMillan, Museum School Director, has a BFA in Ceramics with a minor in Art History from the University of Houston and has graduate courses from Haliburton School of Fine Arts in Ontario, Canada, California State University, and Walden University.

Karen Monahan has a BS in Elementary Education Specialization in Art, Fitchburg State College, Fitchburg, MA.

Nick Nichols has an AS in photographic technology and business management. Nick has been a portrait and wedding photographer since 1972 and has taught at the Museum School since 1986.

Mason Overcash has a MA Art Education, University of Alabama, Birmingham.

Suzanne Peiffer has a BFA from Moore Institute of Art in Philadelphia with further studies at The New School, New York, Stonybrook University, Stonybrook, New York and has studied stone carving with Peter Lipman-Wulff. Her sculpture has been in numerous exhibitions and is in many private collections.

Elaine Rowgo has a BFA in painting from Carnegie-Mellon University. She has been an art instructor on and off for the past 30 years.

Wendy Rivkin has a MFA in Painting and Sculpture from Pratt Institute, Brooklyn, NY and a BA with a concentration in Fine Arts and Art History from New College, Sarasota, FL. She has also studied at The New School and School of Visual Arts in NYC.

Jackie Scone has an AA in Art from BCC and an extensive background in stained glass and operates a home studio gallery. Her specialties include custom tile making, lamp shades, windows and doors.

Bruce Swahlan has a BS in Engineering from the University of Central Florida and is an engineer at Harris Corporation. Pottery is his passion as he is a studio potter who focuses on wheel thrown forms and Raku firing. Bruce regularly



Betsy Bohmer



Jean Thomas



Brett Tam



Mason Overcash

displays his work at the Eau Gallie Artworks Fine Arts Festival and the Museum School Studio Store.

Nancy Trezza is a recently retired educator from the northeast. She has been a successful clay artist for 20 years.

Jean Thomas MFA from Texas Tech University and a Bachelor of Design from the University of Florida.

Frits van Eeden is an internationally known painter and sculptor. He studied at The Hague Academy, the Delft School of Art and the Rietveld Academy in Amsterdam. He has participated in over 80 one man and group exhibitions in America, Europe and Asia. His work consistently sells out in shows in Europe. He has annual shows in Hong Kong and Singapore as well as in the United States. He maintains a home and studio in the Hague and in Melbourne, Florida.

Pat Widdowson has an AS degree in Early Childhood Development from Brevard Community College and taught at the BCC Lab School for several years. She was Camp Coordinator for summer camp 2008 and nine. Pat is currently the volunteer studio assistant for the Museum School.

Redge Wiebusch A.A. Fine Art, A.S. Drafting and Design, Brevard Community College. He is a Studio Assistant for the Ceramic Department, Brevard Community College. He has studied Painting Techniques with Fritz Van Eeden and Figure Drawing with Nancy Dillen, Arrowmont School of Arts and Crafts, TN.

SCHOOL STUDIO/GALLERY ASSISTANTS

Shelly Malkin has been a BAM Gallery/Studio assistant for 3 years. He has a background in sales and marketing from New York. He currently lives with his wife Renee in Melbourne Beach.

Elise Marcusson has been a BAM gallery/Studio assistant for 2 years. She has a degree in Advertising and Design from the School of Visual Arts in NYC and a degree in Travel and Tourism management from Phillips Jr. College in Melbourne. She has lived on the Space Coast for 26 years.

Carlo Ripaldi has been a BAM Gallery/Studio assistant for 5 years. He has a degree in Applied Science and is a former assistant professor at NH Tech College. Currently he enjoys painting and studying painting techniques from other artists. Carlo has exhibited his paintings in MA, NH and FL.

JOIN THE CONVERSATION



Facebook.com/
brevardartmuseum.org/BAMSchool



twitter.com/BAMSchool

How To Register for Classes and Workshops:

In Person: You may register in person by submitting a completed registration form during our business hours:

Monday-Friday, 9am-5pm

Saturday, 10am - 5pm

By Telephone: Give us a call at 321-254-7782 and register over the phone with a credit card. All phone registrations must be paid in full with a credit card.

By Fax: Complete the registration form and send it with Visa, Master Card, Discover, or American Express payment information to: BAM, 321-242-0798.

By Mail: Complete the registration form and send it with check or charge card information to: Brevard Art Museum, 1463 Highland Avenue, Melbourne, Florida 32935.

Online: Visit our website at www.brevardartmuseum.org. Then continue to Museum School and access our online registration system by choosing a class. You may register online by credit card.

Registration:

Please register early! Don't delay! Pre-registration is required for Brevard Art Museum School classes; classes will be filled on a first-come, first-serve basis. Students are registered when payment is received. Most classes are limited to 12 students - some have a smaller limit due to space or equipment limitations - so register early to be assured of a space. If you put off registering for a class or workshop, it may be cancelled due to low enrollment - so please, register early! (Discount offer may not be combined with any other discount and is subject to change.)

Inclement Weather Closings:

In the case of an emergency weather closing, every effort will be made to contact students. We follow Brevard County's Public School System for inclement weather school closings that are broadcast by local radio and television stations. Classes cancelled for emergencies will be rescheduled whenever possible.

Class Confirmations and Cancellations:

We must have a minimum enrollment in order to conduct a class or workshop. This minimum is usually five students. **We do not provide written or phone confirmations to tell you if the minimum enrollment has been met.** Please call us at 321-254-7782 the day before your class to verify that the class has not been cancelled. If it is necessary for the Museum School to cancel a class or workshop, students will be notified no later than 24 hours before the first class. If we do not have a minimum registration and cancel the class, **you will receive a full refund.** If you paid by check, a check will be mailed to you. If you paid by credit card your account will be credited. Students will also have the option to switch to another class or receive a tuition credit that must be redeemed within 6 months.

Student Refunds/Withdrawals/Tuition Credits:

Refunds will only be issued if requested in writing up to **3 days** before first day of classes. You can receive a tuition credit if you withdraw from a class. Notification of your withdrawal must be received in writing prior to the second class meeting to receive a tuition credit. A \$25 administration fee will be assessed on student initiated requests for refunds and tuition credits. **No tuition will be returned or credits issued for failure to attend.** There will be no make-up classes due to a student's illness, unanticipated travel or other reasons not the responsibility of the Brevard Art Museum School.

Make Up Class:

There are no make-up classes due to a student's illness, unanticipated travel or other reasons not the responsibility of the Brevard Art Museum School. No fees will be returned or credits issued for failure to attend.

Additionally:

The Brevard Art Museum School is not responsible for any artwork or personal items lost, stolen, or left in the classrooms, on shelves, or Studio Store. The Brevard Art Museum School reserves the right to withdraw or change classes, instructors, or schedules; to revise tuition and fee structures, and to amend its policies and practices as necessary for the smooth and efficient operation of the school.

By registering you are acknowledging the following release:

I hereby hold Brevard Art Museum School harmless for injury, accident or loss of property that may occur during any Brevard Art Museum School activity wherever conducted, except damages resulting directly from negligence on the part of Brevard Art Museum School or its agents. In the event of accident or illness involving my child, or myself, I hereby authorize the Brevard Art Museum School to arrange for the transportation of my child or myself, whether by ambulance or otherwise, to a proper facility where emergency medical treatment would normally be administered, including, but not limited to, an emergency room of a hospital, a doctor's office, or medical clinic; and to sign releases as may be required in order to obtain any medical or surgical treatment as is immediately required in the judgement of medical authorities at the facility.

Membership...

Brevard Art Museum membership is an opportunity to support the Brevard Art Museum School's programs. Membership has many benefits, including invitations to openings and special events and discounts on classes and event tickets. As a member, you will be able to help shape the future of the Brevard Art Museum School. By joining, you help to ensure that the Museum School will be able to continue to thrive, your tax-deductible (to the extent allowable by law) membership helps fund our valuable community programs and helps us keep our prices affordable for the entire community.

Brevard Art Museum School Registration Winter 2010

RETURNING STUDENT

Student's name _____ age/grade _____ Parent's name (if child) _____
 Street _____ City _____ Zip _____
 Billing address _____ E-mail address _____
 Telephone _____ (home) _____ (work) Member _____ Non-member _____

Course number	Title	Day	Time	Tuition

Date _____ Registered by _____ Membership _____
 Add. Fees (clay, lab fees,) _____
 Total _____

Payment Method:

Cash _____ Check# _____ Credit Card Type _____ Credit Card # _____ Exp. _____

I have read the program outline and understand the registration policies stated.

Please Sign here _____

Please note: You may register by mail, in person, at our website (www.brevardartmuseum.org) or by phone. All phone registrations must be paid in full with a credit card. #321-254-7782. **Refunds will only be issued if requested in writing up to 3 days before first day of class.** A \$25 administration fee will be assessed on all cancellations and transfers. **No fees will be returned or credits issued for failure to attend.** There will be no make-up classes due to a student's illness, unanticipated travel or other reasons not the responsibility of the Brevard Art Museum School.

Releases: Medical, Photo, and Artwork

- I hereby hold Brevard Art Museum School harmless for injury, accident or loss of property that may occur during any Brevard Art Museum School activity wherever conducted, except damages resulting directly from negligence on the part of Brevard Art Museum School or its agents. In the event of accident or illness involving my child, or myself, I hereby authorize the Brevard Art Museum School to arrange for the transportation of my child or myself, whether by ambulance or otherwise, to a proper facility where emergency medical treatment would normally be administered, including, but not limited to, an emergency room of a hospital, a doctor's office, or medical clinic; and to sign releases as may be required in order to obtain any medical or surgical treatment as is immediately required in the judgement of medical authorities at the facility.
- I give the Brevard Art Museum School authorization to use any photograph or video taken of me or my child to be used for educational and publicity purposes.
- I give permission to use my child's artwork in exhibitions or publications to promote the Brevard Art Museum School.

Date _____ **Print Name:** _____

Signature _____

Emergency Contact _____ **Phone** _____



The Brevard Art Museum School/Renee Foosaner Education Center is located in the Eau Gallie Arts District at 1520 Highland Avenue. There are many historic homes in this area as well as parks, gift shops, art galleries, cafes, and restaurants.

How to get here: From 1-95, take exit 183 to Eau Gallie Blvd, also called 518), turn east and go approximately 4 miles to Highland Avenue. Turn left (north) on Highland Avenue, proceed on Highland Avenue through a light intersection to the Brevard Art Museum School located to in the Renee Foosaner Education Center. It is on the left at 1520 Highland Avenue. From U.S. 1, turn east onto Eau Gallie Blve (518) and proceed as above. From beachside, take Highway AIA to EauGallie Blvd (518), turn west and proceed across the Indian River. Turn north on Highland and continue as above.



1463 Highland Avenue
Melbourne, Florida 32935
Call 321-254-7782
www.brevardartmuseum.org

NONPROFIT
ORG.
U.S. POSTAGE
PAID
MELBOURNE, FL
PERMIT NO. 87

Brevard Art Museum School

Art Classes Winter 2010
Two 5 week sessions A or B:
A=Jan. 11 to Feb. 13 and B=Feb. 15 to Mar 20
One 10 week session C= Jan. 11 to Mar 20



The Place to Make Art!



Brett Tam



Suzanne Peiffer



Brevard Art Museum School
is located in the Renee Foosaner Education Center, 1520 Highland Ave.
Melbourne., Florida 32935, 321 254 7782, www.brevardartmuseum.org



Nancy Trezza



Jean Thomas